

9200 FW 101008S0 Update Instructions

Scope

These instructions apply exclusively to Micron 9200 drives with firmware revision 100007C0 and later.

Firmware Update 101008S0 is applicable to all 9200 configurations:

MTFDHAL1T6TCU, MTFDHAL1T9TCT, MTFDHAL3T2TCU,
MTFDHAL3T8TCT, MTFDHAL6T4TCU, MTFDHAL7T6TCT,
MTFDHAL8TATCW, MTFDHAL11TATCW

Firmware Update Instructions Using msecli

Firmware update requires:

- administrator or root user privileges
- drive with 100007C0 or later firmware
- if updating in Windows, download and install the Micron NVMe PCIe Windows Driver
<https://micron.sharefile.com/d-sdc232723d4e4aa3a>

1. Download the latest version of msecli from micron.com*:

<https://www.micron.com/products/solid-state-storage/storage-executive-software>

Early versions of msecli do not fully support the 9200

Latest version is REQUIRED to perform this firmware update

2. Firmware 101008S0 will be provided by your Micron technical representative.

3. List the 9200 in the system to be updated:

```
msecli -L
```

4. Apply the update to the 9200 indicated by "Device Name" using the msecli selective download:

```
msecli -F -U <firmware> -m ALL -n <Device_Name>
```

Windows ex:

```
msecli -F -U Micron_9200_FW-101008S0.tar -m ALL -n mtinvmel7401955CBB6
```

Linux ex:

```
msecli -F -U Micron_9200_FW-101008S0.tar -m ALL -n /dev/nvme0
```

9200 Firmware Update Instructions

5a. If updating from any of the following firmware versions:

100007C0	100007D0	100007H0	100007J0
----------	----------	----------	----------

the **drive/system MUST be cold power cycled** to complete the firmware update.

5b. If updating from any of the following firmware versions:

101008D0	101008P0	101008R0
----------	----------	----------

reboot the drive/system to complete the firmware update.

6. Confirm the firmware has been successfully updated to version 101008S0:

```
msecli -L
```

7. For any drive with existing data **AND** being updated from any of the following firmware versions:

100007C0	100007D0	100007H0	100007J0	101008D0	101008P0
----------	----------	----------	----------	----------	----------

it is **STRONGLY** recommended to backup the data and perform a Secure Erase before the drive is redeployed to ensure data integrity.

Command to Secure Erase a 512B sector size 9200:

```
msecli -N -f 1 -g 512 -m 0 -j 1 -n <Device_Name>
```

Windows ex:

```
msecli - N -f 1 -g 512 -m 0 -j 1 -n mtinvme17401955CBB6
```

Linux ex:

```
msecli - N -f 1 -g 512 -m 0 -j 1 -n /dev/nvme0
```

Command to Secure Erase a 4KB sector size 9200:

```
msecli -N -f 1 -g 4096 -m 0 -j 1 -n <Device_Name>
```

Windows ex:

```
msecli - N -f 1 -g 4096 -m 0 -j 1 -n mtinvme17401955CBB6
```

Linux ex:

```
msecli - N -f 1 -g 4096 -m 0 -j 1 -n /dev/nvme0
```

Firmware Update Instructions Using nvme-cli

Firmware update requires:

- root user privileges
- drive with 100007C0 or later firmware

1. **Download and install nvme-cli v1.6 or later from github.com*:**

<https://github.com/linux-nvme/nvme-cli/releases>

Early versions of nvme-cli do not fully support the 9200
V1.6 or later is REQUIRED to perform this firmware update

2. Firmware 101008S0 will be provided by your Micron technical representative.

3. List the 9200 in the system to be updated:

```
nvme list
```

4. Apply the update to the 9200 indicated by "Node" using the nvme-cli Micron plugin:

```
nvme micron select-download /dev/nvme0 --fw=allBinary.tar --select=ALL
```

5a. If updating from any of the following firmware versions:

100007C0	100007D0	100007H0	100007J0
----------	----------	----------	----------

the **drive/system MUST be cold power cycled** to complete the firmware update.

5b. If updating from any of the following firmware versions:

101008D0	101008P0	101008R0
----------	----------	----------

reboot the drive/system to complete the firmware update.

6. Confirm the firmware has been successfully updated to version 101008S0:

```
nvme list
```

9200 Firmware Update Instructions

7. For any drive with existing data **AND** being updated from any of the following firmware versions:

100007C0	100007D0	100007H0	100007J0	101008D0	101008P0
----------	----------	----------	----------	----------	----------

it is **STRONGLY** recommended to backup the data and perform a Secure Erase before the drive is redeployed to ensure data integrity.

Command to Secure Erase a 512B sector size 9200:

```
nvme format /dev/nvme0 --namespace-id=1 --ses=1 --lbaf=0
```

Command to Secure Erase a 4KB sector size 9200:

```
nvme format /dev/nvme0 --namespace-id=1 --ses=1 --lbaf=1
```

Firmware Update Instructions Using Bootable ISO Image

Firmware update requires:

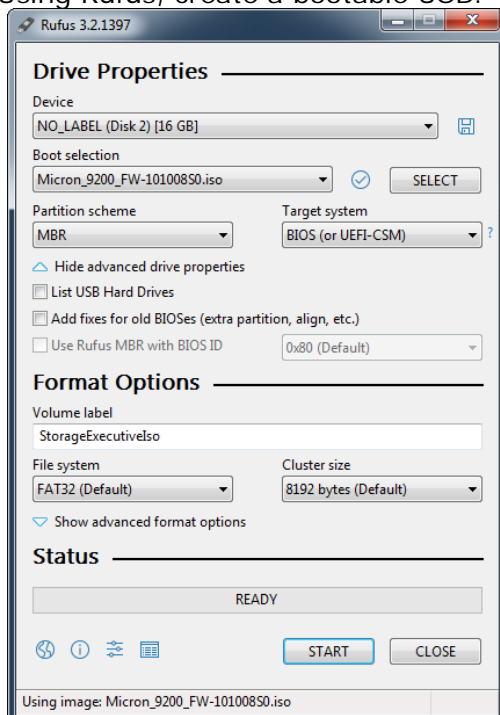
- drive with 100007C0 or later firmware

1. To use USB, download Rufus from:

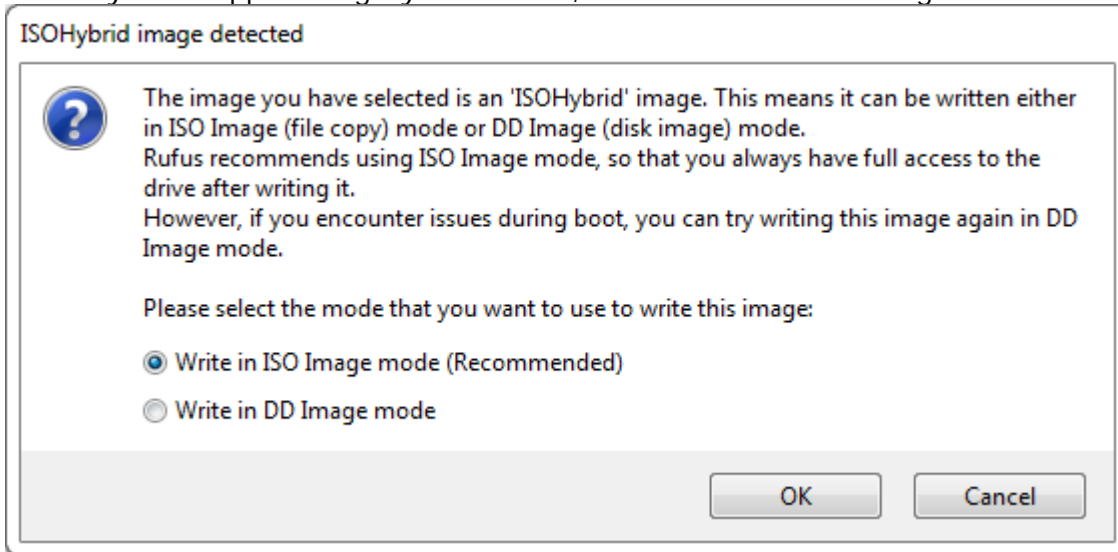
<https://rufus.akeo.ie/>

2. Firmware 101008S0 will be provided by your Micron technical representative.

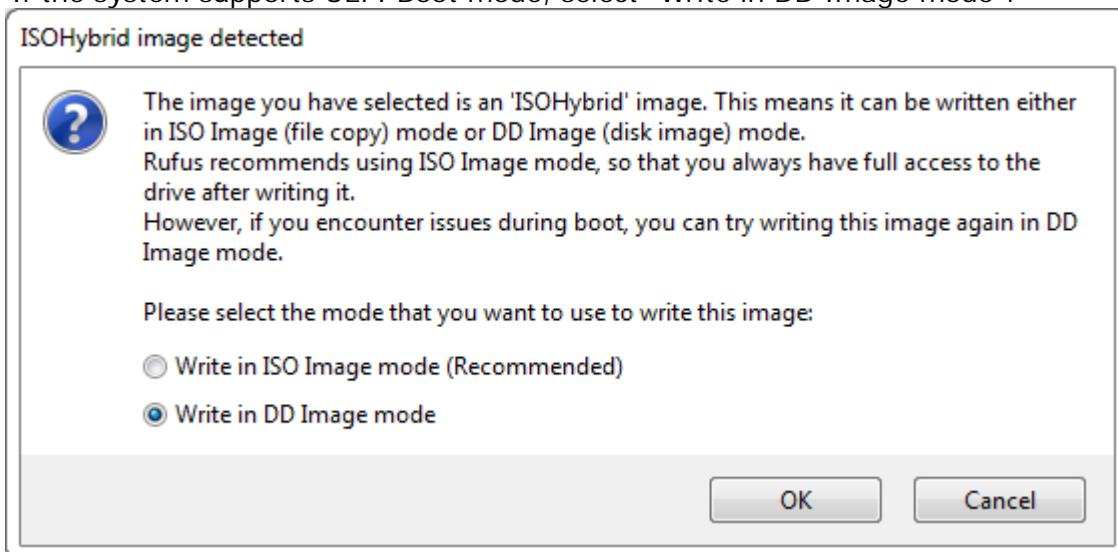
3. Using Rufus, create a bootable USB:



- 4a. If the system supports Legacy Boot mode, select "Write in ISO Image mode":



- 4b. If the system supports UEFI Boot mode, select "Write in DD Image mode":



5. Select the Bootable ISO Image USB as the boot device during system power up to perform the firmware update. No user interaction is required, after the update completes, the system will power off.
6. The Bootable ISO Image can also be used through your system's out-of-band management interface to perform the firmware update. Refer to your system's documentation for further details.

9200 Firmware Update Instructions

7. For any drive with existing data **AND** being updated from any of the following firmware versions:

100007C0	100007D0	100007H0	100007J0	101008D0	101008P0
-----------------	-----------------	-----------------	-----------------	-----------------	-----------------

it is **STRONGLY** recommended to backup the data and perform a Secure Erase before the drive is redeployed to ensure data integrity. Refer to step 7 of Firmware Update Instructions Using msecli or Firmware Update Instructions Using nvme-cli to Secure Erase the drive.

8S0 Firmware Update Procedure Matrix

Refer to the following table for recommended and required firmware update steps for the 8S0 firmware from each of the earlier versions of firmware.

Updating From Firmware	Cold Power Cycle	Warm Reboot	Secure Erase
100007C0	Required	-	STRONGLY RECOMMENDED
100007D0	Required	-	STRONGLY RECOMMENDED
100007H0	Required	-	STRONGLY RECOMMENDED
100007J0	Required	-	STRONGLY RECOMMENDED
101008D0	-	Required	STRONGLY RECOMMENDED
101008P0	-	Required	STRONGLY RECOMMENDED
101008R0	-	Required	-

Notes

Firmware downgrade testing after updating to firmware 101008S0 can be performed with firmware version 101008P0. Firmware should not be downgraded to any other version.

Revision History

Version 0 – Initial release

Version 1 – Added 8S0 Firmware Update Procedure Matrix

Version 2 – Updated link to Micron Windows NVMe PCIe driver